



**Colorado Water Conservation Board**

**Water Supply Reserve Fund - Basin**

**Water Project Summary**

|                                |                                   |             |
|--------------------------------|-----------------------------------|-------------|
| Name of Applicant              | Aldasoro Ranch Homeowners Company |             |
| Name of Water Project          | Ditch Assessment                  |             |
| Basin Account Request Subtotal |                                   | \$31,460.00 |
| Applicant Cash Match           |                                   | \$10,487.00 |
| Applicant In-Kind Match        |                                   | \$0.00      |
| Basin Requests                 |                                   |             |
| <i>Southwest</i>               |                                   | \$31,460.00 |
| Sources of Funding             |                                   |             |

**Grant Details**

Water Project Justification

The Aldasoro Ranch Homeowners Company (ARHOC) provides treated water to its residents outside of Telluride, Colorado. ARHOC serves a growing community and identified the need to secure water rights and develop its municipal supply in the 2015 and 2020 Southwest Basin Implementation Plans (see IPP ID No. 24-SM and Project No. 00248, respectively). Since 2015, ARHOC has diligently worked towards securing its water rights and is in the process of drilling additional wells to bolster its municipal system with a redundant and reliable supply. As a part of securing a legal water supply, ARHOC changed the use of part of the Carr and Waddle Ditch to serve as a source of augmentation water and still owns and operates several historical irrigation ditches within its service area which include, Adams Canal Enlargement Ditch, Sheep Creek Ditch and Navike Ditch (Subject Ditches) to serve as sources of open space irrigation, municipal supply, to fill storage which provides recreation and piscatorial uses. The planned ditch assessment will identify areas of aging infrastructure on the Subject Ditches, to efficiently divert and convey diversions from Deep Creek, Sheep Creek and Remine Creek to the storage rights, augmentation ponds and points of depletion. The assessment will identify specific projects that can be implemented to increase the individual ditches efficiency and future management of ARHOC's decreed augmentation plans. In addition to bolstering the community's municipal water supply this project will also optimize the amount of diversions needed from Deep Creek, Sheep Creek, and Remine Creek to ensure CWCB instream flow rights on Deep Creek and the San Miguel River are both protected and continue to be met. By increasing ditch efficiency, drought resiliency is enhanced by reducing water losses or inefficiencies.

ARHOC's proposed project aligns with multiple goals and actions in the Colorado Water Plan (CWP) and with multiple goals and strategies in the Southwest BIP.

Alignment with Colorado Water Plan:

The Colorado Water Plan guides future decision-making and supports local actions to address water challenges with a collaborative, balanced, and solution-oriented approach that builds resilience. The Colorado Water Plan includes actions in four focus areas that work together for a stronger state:

1. Vibrant Communities
2. Robust Agriculture

- 3. Thriving Watersheds
- 4. Resilient Planning

ARHOC's proposed project aligns best with Focus Areas 1, 3, and 4 (Vibrant Communities, Thriving Watersheds, and Resilient Planning). ARHOC's proposed project aligns with CWP's identified Partner Actions and projects:

- Optimize investments in infrastructure and increase efficiency and conservation.
- Proper and accurate monitoring of water use and reduce water loss.
- Meeting future water needs by determining where best to invest in infrastructure to increase efficiency of aging ditch infrastructure.
- By increasing the aging ditches efficiency future diversions can be optimized further protecting CWCB's instream flow rights during times of drought.
- Assessment and inventory of ditches will help determine how best to deliver irrigation, municipal, storage and consumptive use credits to ARHOC which will help meet growth, future uncertainty, and provide drought resiliency.
- Wise water use will be implemented by developing an Operations and Management Plan which will provide guidelines and tools for recommended ditch operations and maintenance, such as spring startup procedures, ditch cleaning, best management practices for stormwater and snowmelt runoff, private lot irrigation guidance, and fall shutdown procedures.
- Rehabilitate aging agricultural storage facilities and diversion structures, and
- Build conveyance and ditch efficiency improvements.

Alignment with Southwest BIP goals:

The Southwest Basin Implementation Plan identifies the following goals:

- A. Balance all needs and reduce conflict.
- B. Support the needs of agriculture.
- C. Meet municipal and industrial water needs.
- D. Meet recreational water needs.
- E. Meet environmental water needs.
- F. Promote healthy watersheds.
- G. Manage risk associated with the Colorado River Compact.

ARHOC's proposed project aligns with Goal C (Meet municipal and industrial water needs), Goal E (Meet environmental water needs), and Goal G (Manage risk associated with the Colorado River Compact). Within these goals, the proposed project supports the following strategies to meet those goals:

- C1: Pursue projects to meet the current municipal and future municipal demand
- C2: Provide safe and accessible drinking water to Southwest Colorado's citizens and visitors.
- E2: Support efforts to protect, maintain, monitor, and improve the condition and natural function of streams, lakes, wetlands, and riparian areas to promote self-sustaining fisheries, support native species and functional habitat (aquatic and terrestrial ecosystems) in the long term, and adapt to changing conditions.
- G1: Plan and help preserve water supply options for all existing and new uses and values.

### Applicant & Grantee Information

Name of Grantee: Aldasoro Ranch Homeowners Company

Mailing Address: 307 Society Turn Drive, Unit C Telluride CO 81435

Organization Contact: Shelly Duplan

Position/Title:

Email: [director@aldasororanch.com](mailto:director@aldasororanch.com)

Phone:

Grant Management Contact: Shelly Duplan

Position/Title:

Email: director@aldasororanch.com

Phone:

Grant Management Contact - Alternate: David Schiowitz

Position/Title: Water Resources Team Leader

Email: davids@sgm-inc.com

Phone: 970-403-0950

### Agency Information

|                                     |              |
|-------------------------------------|--------------|
| Agency Type                         | Municipality |
| Current Assessment                  |              |
| Number of Shareholders or Customers | 109          |
| Number of Shares                    |              |
| Number of Taps                      | 109          |
| Average Monthly Water Bill          |              |
| Annual Water Delivery (acre-feet)   | 25           |

### Description of Grantee/Applicant

No description provided

### Location of Water Project

|               |   |
|---------------|---|
| Latitude      | 37.963520                                 |
| Longitude     | -107.894578                               |
| Lat Long Flag |   |
| Water Source  | Deep Creek, Sheep Creek, and Remine Creek |
| Basins        | Southwest                                 |
| Counties      | San Miguel                                |
| Districts     | 60-San Miguel River Basin                 |

### Water Project Overview

|                                     |           |
|-------------------------------------|-----------|
| Major Water Use Type                | Municipal |
| Type of Water Project               | Planning  |
| Scheduled Start Date - Design       | 6/1/2025  |
| Scheduled Start Date - Construction |           |
| Description                         |           |

Aldasoro Ranch Homeowners Company (ARHOC) is a privately incorporated company that manages a residential subdivision near Telluride, CO. A historical ditch network provides irrigation water supply, municipal, and augmentation water for ARHOC, as well as six additional entities. Carr and Waddle Ditch, Adams Canal Enlargement Ditch, Sheep Creek Ditch and Navike Ditch (Subject Ditches) have existing inefficiencies and potential structural conditions that contribute to water loss and prevent optimization of the water rights. ARHOC desires an assessment of the current condition of the Subject Ditches, which will be used to determine priority issues and will provide guidelines and tools for ongoing system operations, management, and maintenance. A list will be developed of location-specific improvement options to address the priority issues and generate an Engineer's Opinion of Probable Costs for the implementation of selected improvements. An Operations and Management Plan will provide guidelines and tools for recommended ditch operations and maintenance, such as spring startup procedures, ditch cleaning, best management practices for stormwater and snowmelt runoff, private lot irrigation guidance, and fall shutdown procedures.

## Measurable Results

New Storage Created (acre-feet)  
New Annual Water Supplies Developed or Conserved (acre-feet), Consumptive or Nonconsumptive  
Existing Storage Preserved or Enhanced (acre-feet)  
New Storage Created (acre-feet)  
Length of Stream Restored or Protected (linear feet)  
Length of Pipe, Canal Built or Improved (linear feet)  
Efficiency Savings (dollars/year)  
Efficiency Savings (acre-feet/year)  
Area of Restored or Preserved Habitat (acres)  
Quantity of Water Shared through Alternative Transfer Mechanisms or water sharing agreement (acre-feet)  
Number of Coloradans Impacted by Incorporating Water-Saving Actions into Land Use Planning  
Number of Coloradans Impacted by Engagement Activity

### Other

The identified priority projects in the Ditch Assessment, once constructed, will result in an efficiency savings by optimizing the amount of diversions needed, the development and use of conditional augmentation water rights, and a firming of the available storage potential of decreed reservoirs on the Subdivision. The exact number is yet to be determined as this phase of the project is a ditch assessment and study.



Last Update: January 10, 2022

<https://cwcb.colorado.gov/>

| <b>Colorado Water Conservation Board</b>   |  |
|--|--|
| <b>Water Supply Reserve Fund</b>   |  |
| <b><u>Exhibit A - Statement of Work</u></b>  |  |
| <b>Date:</b>   | <b>March 26, 2025</b>                    |
| <b>Water Activity Name:</b>  | <b>Ditch Assessment</b>                  |
| <b>Grant Recipient:</b>  | <b>Aldasoro Ranch Homeowners Company</b> |
| <b>Funding Source:</b>   | <b>Southwest Basin Roundtable</b>        |
| <p><b>Water Activity Overview:</b> (Please provide brief description of the proposed water activity (no more than 200 words). Include a description of the overall water activity and specifically what the WSRF funding will be used for. (PLEASE DEFINE ALL ACRONYMS)).</p> <p><b>Aldasoro Ranch Homeowners Company (ARHOC) is a privately incorporated company that manages a residential subdivision near Telluride, CO. A historical ditch network provides irrigation water supply, municipal, and augmentation water for ARHOC, as well as six additional entities. Carr and Waddle Ditch, Adams Canal Enlargement Ditch, Sheep Creek Ditch and Navike Ditch (Subject Ditches) have existing inefficiencies and potential structural conditions that contribute to water loss and prevent optimization of the water rights. ARHOC desires an assessment of the current condition of the Subject Ditches, which will be used to determine priority issues and will provide guidelines and tools for ongoing system operations, management, and maintenance. A list will be developed of location-specific improvement options to address the priority issues and generate an Engineer’s Opinion of Probable Costs for the implementation of selected improvements. An Operations and Management Plan will provide guidelines and tools for recommended ditch operations and maintenance, such as spring startup procedures, ditch cleaning, best management practices for stormwater and snowmelt runoff, private lot irrigation guidance, and fall shutdown procedures.</b></p> |  |
| <p><b>Objectives:</b> (List the objectives of the project. (PLEASE DEFINE ACRONYMS)).</p> <ul style="list-style-type: none"> <li>• <b>Conduct ditch surveys that will focus on diversion structures, control and measurement structures, ditch channel conditions to identify locations with low or eroding ditch banks, ditch failures, areas of seepage, high-depositional areas, landslide-prone reaches, and drainage crossings or other existing or developing conveyance or control-related issues.</b></li> <li>• <b>Evaluate conveyance capacities of the Subject Ditches for comparison to the total decreed flow rates per respective Subject Ditch.</b></li> <li>• <b>Produce a Ditch Assessment Report with summary tables, figures, project mapping of surveyed ditch alignments, control and measurement structures, and locations and reaches of issues identified, as well as cost estimates for each recommended improvement option and funding options.</b></li> <li>• <b>Produce a Ditch Operations and Management Plan.</b></li> </ul>   |  |



Last Update: January 10, 2022

<https://cwcb.colorado.gov/>

| <b>Tasks</b>   |  |
|--|--|
| Provide a detailed description of each task using the following format: (PLEASE DEFINE ACRONYMS)   |  |
| <b><u>Task 1 - Project Coordination, Research, Inventory, Mapping and Project Kickoff Meeting</u></b>  |  |
| Description of Task:   |  |
| <b>ARHOC's consultant will conduct background research to supplement information it has already compiled on the Subject Ditches. This will include an inventory of ditches and their associated water rights, ownership, and decreed diversion rates, geospatial data, photographs, and other existing data and information for the ditch assessment. This task also includes a virtual kick-off meeting with ARHOC and overall project coordination and management throughout all phases.</b> |  |
| Method/Procedure:  |  |
| <b>Conduct background research, review decrees, ownership information, compile existing geospatial data (lidar, topography, aerial and satellite photography, etc).<br/>Hold virtual kick-off meeting with ARHOC.</b>  |  |
| Grantee Deliverable: (Describe the deliverable the grantee expects from this task)   |  |
| <ul style="list-style-type: none"><li>• <b>Summary of background information, assessment methods, and findings</b></li><li>• <b>Inventory of ditches and their associated water rights, ownership, and decreed diversion rates, geospatial data, photographs, and other existing data and information for the ditch assessment.</b></li><li>• <b>List of known issues and problem areas already identified by ARHOC, to ensure evaluation during the field survey in Task 2.</b></li></ul>     |  |
| CWCB Deliverable: (Describe the deliverable the grantee will provide CWCB documenting the completion of this task)   |  |
| <b>No deliverable for CWCB. Information gathered during this task will be incorporated into the deliverables for Task 4.</b>   |  |



Last Update: January 10, 2022

<https://cwcb.colorado.gov/>

| <b>Tasks</b>   |  |
|--|--|
| Provide a detailed description of each task using the following format: (PLEASE DEFINE ACRONYMS)   |  |
| <b><u>Task 2 - Field Survey and Data Collection</u></b>  |  |
| Description of Task:   |  |
| <p><b>ARHOC and their consultant will conduct field surveys of the Subject Ditches to inform the assessment report.</b></p> <p>The ditch surveys will focus on diversion structures, control and measurement structures, ditch channel conditions to identify locations with low or eroding ditch banks, ditch failures, areas of seepage, high-depositional areas, landslide-prone reaches, and drainage crossings or other existing or developing conveyance or control-related issues. Ditch channel measurements will also be collected to estimate conveyance capacity of the ditches for comparison to the full decreed absolute and conditional diversion rates, plus delivery of additional water rights, if applicable.</p> <p>During the ditch surveys, private lots will be identified within ARHOC boundaries that the Subject Ditches flow through or that contain turnouts from the Subject Ditches, noting water features or consumptive uses of ditch water, if encountered.</p>                         |  |
| Method/Procedure:  |  |
| <p>The field surveys will include two scientists or engineers walking the length of each Subject Ditch from headgate to terminus to collect photographs, measurements, observations, and GPS data of ditch alignments, features, structures, turnouts, existing and potential areas of concern, and any private land uses and features of the Subject Ditches water. Three days (36 hours, including mobilization) are needed for two field staff to complete the ditch surveys.</p> <p>Specific observations and measurements to be collected for ditch capacity estimates include: measurement structure dimensions, condition, issues affecting measurement structure accuracy, high-water marks at or near measurement structures' measurement location, approximate maximum water surface elevation at measurement structures' measurement location corresponding to ditch-full stage, as well as channel measurements needed to estimate ditch-full flow rates using Manning's Equation for open channel flow.</p> |  |
| Grantee Deliverable: (Describe the deliverable the grantee expects from this task)   |  |
| <b>Information collected during this Task will be used for Task 3 and Task 4. No specific deliverables for the grantee will be generated as a part of Task 2.</b>  |  |
| CWCB Deliverable: (Describe the deliverable the grantee will provide CWCB documenting the completion of this task)   |  |
| <b>No deliverable for CWCB. Information gathered during this task will be incorporated into the deliverables for Task 4.</b>   |  |



Last Update: January 10, 2022

<https://cwcb.colorado.gov/>

| Tasks  |
|--|
| Provide a detailed description of each task using the following format: (PLEASE DEFINE ACRONYMS)   |
| <b><u>Task 3 - Evaluation of Findings, Priority Issues Determination, Improvement Options and Cost Estimate</u></b>  |
| Description of Task:   |
| <b>Information and initial findings from the ditch surveys will be compiled and summarized. ARHOC will meet with their consultant to review the initial findings, determine priority issues and select improvements for cost estimation.</b>   |
| Method/Procedure:  |
| <b>Compilation of data and observations obtained during Task 2, through creation of summary tables, figures, maps, and photo-markup diagrams to summarize findings.</b>  |
| <b>Calculations will be made to estimate ditch flow rate capacities using Manning’s Equation for open channel flow and inputting ditch channel measurements from the field survey. As a secondary method for estimating ditch flow rate capacities, field observations and measurements of flume dimensions, high-flow lines in flumes, and minimum ditch bank heights will be used in conjunction with the stage-discharge rating tables for the respective measurement structures. Next, a comparison table will be used to compare the Subject Ditches’ estimated flow rate capacity to their full decreed absolute and conditional diversion rates, highlighting ditches that may not have sufficient capacity to divert their full decreed diversion rates.</b> |
| <b>Upon initial evaluation of findings, a meeting will be scheduled with ARHOC to present the findings and issues, and to determine priority issues. A list of location-specific improvement options will be developed to address the priority issues and generate an Engineer’s Opinion of Probable Costs (EOPC) for the implementation of selected improvements.</b>   |
| Grantee Deliverable: (Describe the deliverable the grantee expects from this task)   |
| <ul style="list-style-type: none"> <li>• <b>Tables for ditch inventories, attributes, assessment findings, and priority issues</b></li> <li>• <b>Project mapping denoting surveyed ditch alignments, control and measurement structures, and locations and reaches of issues identified</b></li> <li>• <b>EOPC for each recommended improvement option.</b></li> </ul>   |
| CWCB Deliverable: (Describe the deliverable the grantee will provide CWCB documenting the completion of this task)   |
| <b>No deliverable for CWCB. Information gathered during this task will be incorporated into the deliverables for Task 4.</b>   |





Last Update: January 10, 2022

<https://cwcb.colorado.gov/>

| <b>Tasks</b>   |  |
|--|--|
| Provide a detailed description of each task using the following format: (PLEASE DEFINE ACRONYMS)   |  |
| <b>Task 4 - Ditch Assessment Report and Operations and Management Plan</b>   |  |
| Description of Task:   |  |
| <p><b>A ditch assessment report will be prepared to provide a comprehensive overview of existing conditions, priority issues and selected improvements, as well as an operations and management plan for ARHOC’s Subject Ditches. The aim of this ditch assessment report and operations and management plan is to identify existing issues and provide improvement options and guidance to increase the reliability and efficiency of diversion deliveries.</b></p>   |  |
| Method/Procedure:  |  |
| <p><b>Ditch assessment report will be prepared with information and feedback gathered during Task 3, and will cover background information, system attributes and inventories, ditch survey data, ditch evaluation and flow capacity estimates, priority issues, improvement options with cost estimates, and an operations and management plan.</b></p> <p><b>The ditch operations and management plan will provide useful tools and guidance to optimize spring startup procedures, ditch cleaning, best management practices for stormwater and snowmelt runoff, private lot irrigation guidance, and fall shutdown procedures.</b></p> <p><b>A list of funding opportunities will be compiled for implementation of priority projects listed in the ditch assessment report.</b></p> |  |
| Grantee Deliverable: (Describe the deliverable the grantee expects from this task)   |  |
| <p><b>Ditch Assessment Report</b><br/> <b>Ditch Operations and Management Plan</b></p>   |  |
| CWCB Deliverable: (Describe the deliverable the grantee will provide CWCB documenting the completion of this task)   |  |
| <p><b>Ditch Assessment Report</b><br/> <b>Ditch Operations and Management Plan</b></p>   |  |



Last Update: January 10, 2022

<https://cwcb.colorado.gov/>

### Budget and Schedule

**Exhibit B - Budget and Schedule:** This Statement of Work shall be accompanied by a combined [Budget and Schedule](#) that reflects the Tasks identified in the Statement of Work and shall be submitted to CWCB in [excel format](#). A separate [excel formatted](#) Budget is required for engineering costs to include rate and unit costs.

### Reporting Requirements

**Progress Reports:** The grantee shall provide the CWCB a progress report every 6 months, beginning from the date of issuance of a purchase order, or the execution of a contract. The progress report shall describe the status of the tasks identified in the statement of work, including a description of any major issues that have occurred and any corrective action taken to address these issues. The CWCB may withhold reimbursement until [satisfactory progress reports](#) have been submitted.

**Final Report:** At completion of the project, the grantee shall provide the CWCB a Final Report on the grantee's letterhead that:

- Summarizes the project and how the project was completed.
- Describes any obstacles encountered, and how these obstacles were overcome.
- Confirms that all matching commitments have been fulfilled.
- Includes photographs, summaries of meetings and engineering reports/designs.

### Payments

Payment will be made based on actual expenditures, must include invoices for all work completed and must be on grantee's letterhead. The request for payment must include a description of the work accomplished by task, an estimate of the percent completion for individual tasks and the entire Project in relation to the percentage of budget spent, identification of any major issues, and proposed or implemented corrective actions.

The CWCB will pay the last 10% of the [entire](#) water activity budget when the Final Report is completed to the satisfaction of CWCB staff. Once the Final Report has been accepted, and final payment has been issued, the water activity and purchase order or contract will be closed without any further payment. Any entity that fails to complete a satisfactory Final Report and submit to CWCB within 90 days of the expiration of a purchase order or contract may be denied consideration for future funding of any type from CWCB.

### Performance Requirements

Performance measures for this contract shall include the following:

(a) Performance standards and evaluation: Grantee will produce detailed deliverables for each task as specified. Grantee shall maintain receipts for all project expenses and documentation of the minimum in-kind contributions (if applicable) per the budget in Exhibit B. Per Grant Guidelines, the CWCB will pay out the last 10% of the budget when the final deliverable is completed to the satisfaction of CWCB staff. Once the final deliverable has been accepted, and final payment has been issued, the purchase order or grant will be closed without any further payment.

(b) Accountability: Per the Grant Guidelines full documentation of project progress must be submitted with each invoice for reimbursement. Grantee must confirm that all grant conditions have been complied with on each invoice. In addition, per the Grant Guidelines, Progress Reports must be submitted at least once every 6 months. A Final Report must be submitted and approved before final project payment.

(c) Monitoring Requirements: Grantee is responsible for ongoing monitoring of project progress per Exhibit A. Progress shall be detailed in each invoice and in each Progress Report, as detailed above. Additional inspections or field consultations will be arranged as may be necessary.

(d) Noncompliance Resolution: Payment will be withheld if grantee is not current on all grant conditions. Flagrant disregard for grant conditions will result in a stop work order and cancellation of the Grant Agreement.



**COLORADO**

Colorado Water Conservation Board

Department of Natural Resources

**Colorado Water Conservation Board**

**Water Supply Reserve Fund**

**EXHIBIT B - BUDGET AND SCHEDULE - Direct & Indirect (Administrative) Costs**

Date: March 2024

Water Activity Name: Ditch Assessment

Grantee Name: Aldasoro Ranch Homeowners Company

| <u>Task No.</u> <sup>(1)</sup> | <u>Description</u>   | <u>Start Date</u> <sup>(2)</sup> | <u>End Date</u> | <u>Matching Funds</u><br>(cash & in-kind) <sup>(3)</sup> | <u>WSRF Funds</u> | <u>Total</u>    |
|--------------------------------|--|----------------------------------|-----------------|--|-------------------|-----------------|
| 1                              | Project Coordination, Research, Inventory, Mapping, and Project Kickoff Meeting            | May 2025                         | July 2025       | \$1,472  | \$4,416           | \$5,888         |
| 2                              | Field Survey & Data Collection   | May 2025                         | July 2025       | \$2,917  | \$8,751           | \$11,668        |
| 3                              | Evaluation of Findings, Priority Issues Determination, Improvement Options & Cost Estimate | May 2025                         | August 2025     | \$1,872  | \$5,615           | \$7,487         |
| 4                              | Ditch Assessment Report & Operations and Management Plan                                   | July 2025                        | August 2025     | \$3,802  | \$11,405          | \$15,206        |
| 5                              | Direct Costs   | June 2025                        | August 2025     | \$425  | \$1,274           | \$1,698         |
| <b>Total</b>                   |  |                                  |                 | <b>\$10,487</b>  | <b>\$31,460</b>   | <b>\$41,947</b> |

**(1)** The single task that include costs for Grant Administration must provide a labor breakdown (see Indirect Costs tab below) where the total WSRF Grant contribution towards that task does not exceed 15% of the total WSRF Grant amount.

**(2)** Start Date for funding under \$50K - ~ 45 Days from Director Approval; Start Date for funding over \$50K - ~90 Days from Board Approval.

• Reimbursement eligibility commences upon the grantee's receipt of a Notice to Proceed (NTP)

• **NTP will not be accepted as a start date.** Project activities may commence as soon as the grantee enters contract and receives formal signed State Agreement.

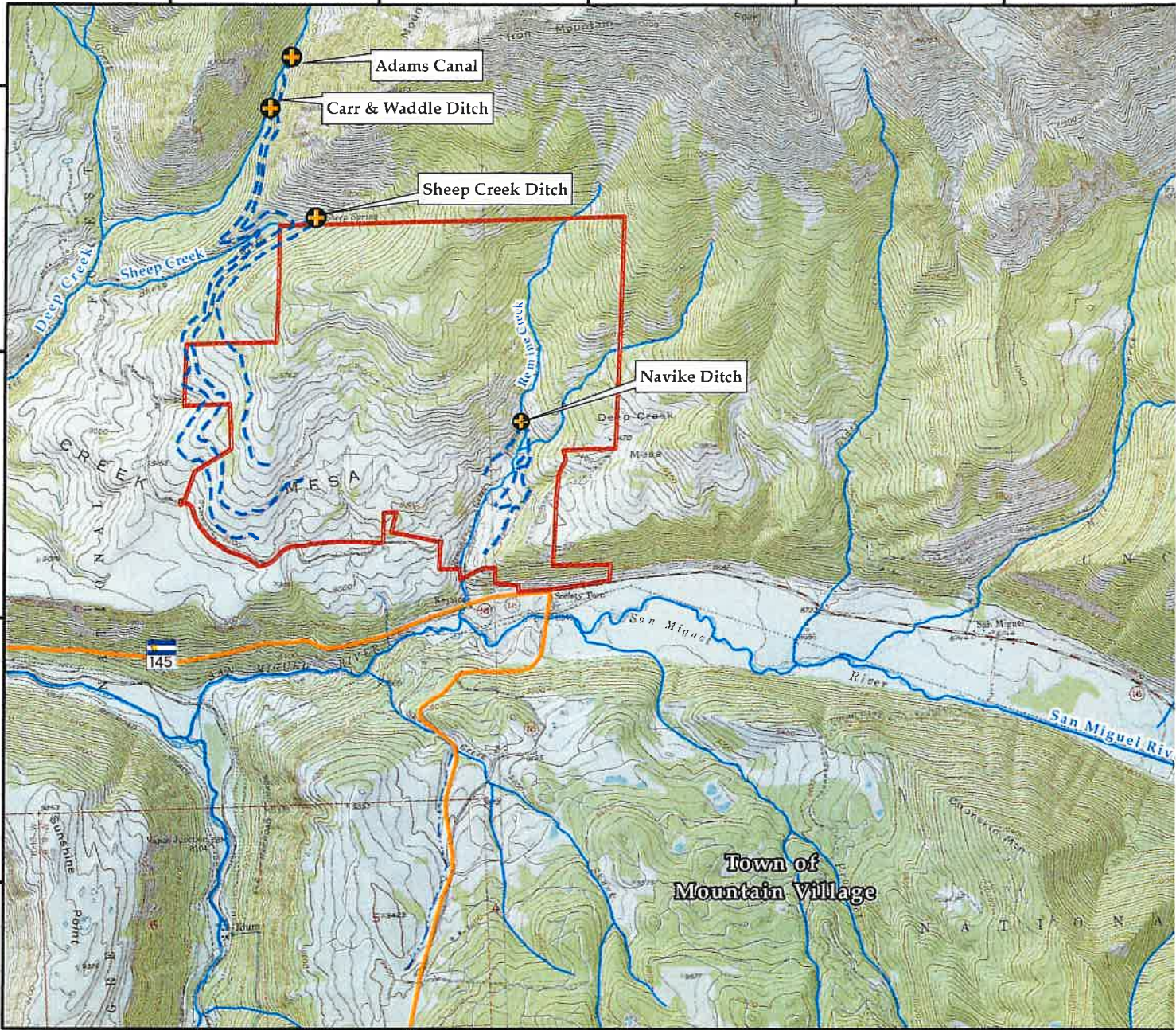
The CWCB will pay the last 10% of the entire water activity budget when the Final Report is completed to the satisfaction of the CWCB staff project manager. Once the Final Report has been accepted, the final payment has been issued, the water activity and purchase order (PO) or contract will be closed without any further payment. Any entity that fails to complete a satisfactory Final Report and submit to the CWCB with 90 days of the expiration of the PO or contract may be denied consideration for future funding of any type from the CWCB.

• Additionally, the applicant shall provide a progress report every 6 months, beginning from the date of contract execution

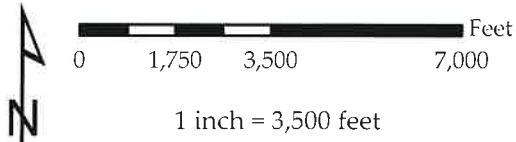
• Standard contracting procedures dictate that the Expiration Date of the contract shall be 5 years from the Effective Date.



Project: Republic of Durango\1000\108\_Aldasoro Ranch Homeowner Company GIS\MMDs\_2025\Figure 1 Vicinity Map.mxd



**SGM**  
 1970 East 3rd Ave, Suite 205  
 Durango, CO 81301  
 (970) 385-2340  
 www.sgm-inc.com



Designed by: DSS  
 Checked by: JD  
 Date: 3/25/2025  
 Scale: 1:42,000

**Ditch Assessment and Manu**  
**Vicinity Map**  
**Aldasoro Ranch Homeowne**





March 25, 2025

**David Schiowitz, PG**  
Water Resources Team Leader  
SGM

Re: Letter of Commitment

Dear David,

The Aldasoro Ranch Homeowners Company (HOC) is committing a 25% match to fund the 2025 Ditch Assessment Report and Operations and Management Plan. The 25% match is estimated to be \$10,487 based on the overall project cost of \$41,975.

The HOC is in need of professional help to evaluate the existing ditch conditions as well as ongoing guidelines for best management practices and tools for system operations and maintenance.

Please contact me if you have any questions at 970-729-2355. Thank you.

Sincerely,

*Shellie Duplan*

Shellie Duplan  
HOC Director of Operations





## SOUTHWEST BASIN ROUNDTABLE'S EVALUATION QUESTIONNAIRE

To assist the Roundtable in determining whether and to what extent a proposed project and/or process meets the values set forth in the Roundtable Bylaws and goals of the Basin Implementation Plan, the following questions should be addressed separately as can reasonably be answered by the applicant. *Note: this is not an exhaustive list and additional questions may be asked of the applicant.*

1. *Identify the benefit(s) the project would provide. Are there multiple purposes (Agricultural, Environmental, Municipal, Industrial, Recreational) that the project would meet as defined in the Basin Implementation Plan? Note: Projects that meet multiple purposes are strongly encouraged; however, this does not mean that a single purpose project would be rejected.*

Response: The project is a study, which once its recommendations are implemented, would increase ditch efficiency and management, and would help ensure CWCB instream flow rights are protected and met. By increasing ditch efficiency, drought resiliency is enhanced by reducing water losses or inefficiencies. The project would meet Agricultural purposes as defined by the BIP.

Alignment with Southwest BIP goals:

The Southwest Basin Implementation Plan identifies the following goals:

- A. Balance all needs and reduce conflict.
- B. Support the needs of agriculture.
- C. Meet municipal and industrial water needs.**
- D. Meet recreational water needs.
- E. Meet environmental water needs.**
- F. Promote healthy watersheds.
- G. Manage risk associated with the Colorado River Compact.**

ARHOC's proposed project aligns with Goal C (Meet municipal and industrial water needs) and Goal G (Manage risk associated with the Colorado River Compact).

Within these goals, the proposed project supports the following strategies to meet those goals:

- C1: Pursue projects to meet the current municipal and future municipal demand
- C2: Provide safe and accessible drinking water to Southwest Colorado's citizens and visitors.
- E2: Support efforts to protect, maintain, monitor, and improve the condition and natural function of streams, lakes, wetlands, and riparian areas to promote self-sustaining fisheries, support native species and functional habitat (aquatic and terrestrial ecosystems) in the long term, and adapt to changing conditions.

Aldasoro Ranch Homeowners Company  
Ditch Assessment

- G1: Plan and help preserve water supply options for all existing and new uses and values.

2. *Outline the steps needed for completion of the project. Are there permit issues that must be overcome? How will funds acquired in this process be used to accomplish the final goal?*

Response: The Ditch Assessment project will begin with a field survey and inventory of existing structures and their condition. The data obtained will be used to complete the study with recommendations. No permits are required for the scope of work identified in this project.

3. *For prioritization of different proposals and assessment of the merits of the plan, can this project be physically built with this funding? Are further studies needed before actual construction is commenced (if the project anticipates construction)? Will these studies or additional steps delay the completion of the project substantially?*

Response: The project is an assessment and study and does not include construction with this phase. Future phases of the project will include engineering and construction of recommended improvements.

4. *What is the ability of the sponsor to pay for the project? What actions have been taken to secure local funding? Are there supporting factors that affect the sponsor's ability to pay? Please provide a summary of the sponsor's financial condition such as customer fee structure, mill levy rate, or other applicable information that demonstrates the sponsor's ability to support the project. For example, has the sponsor increased assessments or rates to meet the project requirements in the past five years. Also, address how a loan could address the needs of the applicant instead of a grant?*

Response: The applicant will use cash reserves to pay for the matching 25% of the grant. A letter of commitment from ARHOC has been included with the application.

5. *Which alternative sources of water or alternative management ideas have you considered? Are there water rights conflicts involving the source of water for the project? If yes, please explain.*

Response: The project is an assessment and will explore alternatives and any associated water rights conflicts. This project will explore utilizing existing conditional water rights owned by ARHOC to help provide redundant water supplies and additional augmentation water for potential extended call periods on the San Miguel River due to drought conditions.

6. *Has there been public input solicited and is there local support for the project? Please provide a brief summary of public input if applicable.*

Response: The project was presented to the Homeowners Association Board and was supported by the Board.

7. *Is there opposition to the project? If there is opposition, how have those concerns been addressed? Identify any conflicts that may exist and how they will be addressed.*

Aldasoro Ranch Homeowners Company  
Ditch Assessment

Response: No.

8. *Does this project affect the protection and conservation of the natural environment, including the protection of open space? If yes, please explain.*

Response: The Subject Ditches included in the Ditch Assessment irrigate open space adjacent to ARHOC. Improving the efficiencies and any structural issues with the Subject Ditches will improve the ability to irrigate the open spaces and maintain those natural environments.

9. *Are there impacts of the proposed action on other non-decreed values of the stream or river? Nondecreed values may include things such as non-decreed water rights or uses, recreational uses and soil/land conservation practices.*

Response: As the project is an assessment/study, there will be no resulting impacts on other non-decreed values of the stream or river. Ultimately, the goal of the project is to identify areas of aging infrastructure on the Subject Ditches so that improvements can be made to efficiently divert and convey diversions from Deep Creek, Sheep Creek and Remine Creek to the augmentation ponds and points of depletion. The assessment will identify specific projects that can be implemented to increase the individual ditches efficiency and future management of ARHOC's decreed augmentation plan. In addition to bolstering the community's municipal water supply the overall benefits of the project will also optimize the amount of diversions needed from Deep Creek, Sheep Creek, and Remine Creek to ensure CWCB instream flow rights Deep Creek and the San Miguel River are both protected and continue to be met.

10. *Does this project relate to a Stream Management Plan (SMP) or Needs Assessment for one of southwest Colorado river reaches? If yes, please explain and provide detailed evidence of how project will meet SMP goals or needs.*

Response: No

11. *Does this project relate to local land use plans? If yes, please explain.*

Response: No

12. *Does the project depend on a conversion of an agricultural water right? If yes, please explain.*

Response: No

13. *Does the project support agricultural development or protect the existing agricultural economy? If yes, please explain.*

Response: No.

14. *Does the project optimize existing water rights and/or existing infrastructure? If yes, please explain.*

Response: Yes. The project will identify how to improve the existing aging infrastructure of the Subject Ditches, which are historic irrigation ditches. The Operation and Management Plan will consider how to best optimize the water rights for use within ARHOC's boundaries.

15. *Does the applicant anticipate future funding requests to complete the additional*

Aldasoro Ranch Homeowners Company  
Ditch Assessment

*components of this project? Does the applicant have a long-term operation, maintenance, and replacement plan? When was the last update of the plan?*

Response: Yes, future funding requests are anticipated for implementation of the recommended projects in the Ditch Assessment. As a part of the assessment, an Operation and Management Plan of the Subject Ditches will be completed.

16. *Does this project have an education component? If yes, please explain how it is consistent with the Roundtable's [Education Action Plan](#).*

Response: No, the project does not have an education component.